

HOTEL GRAND PACIFIC FUNCTION CAPACITIES

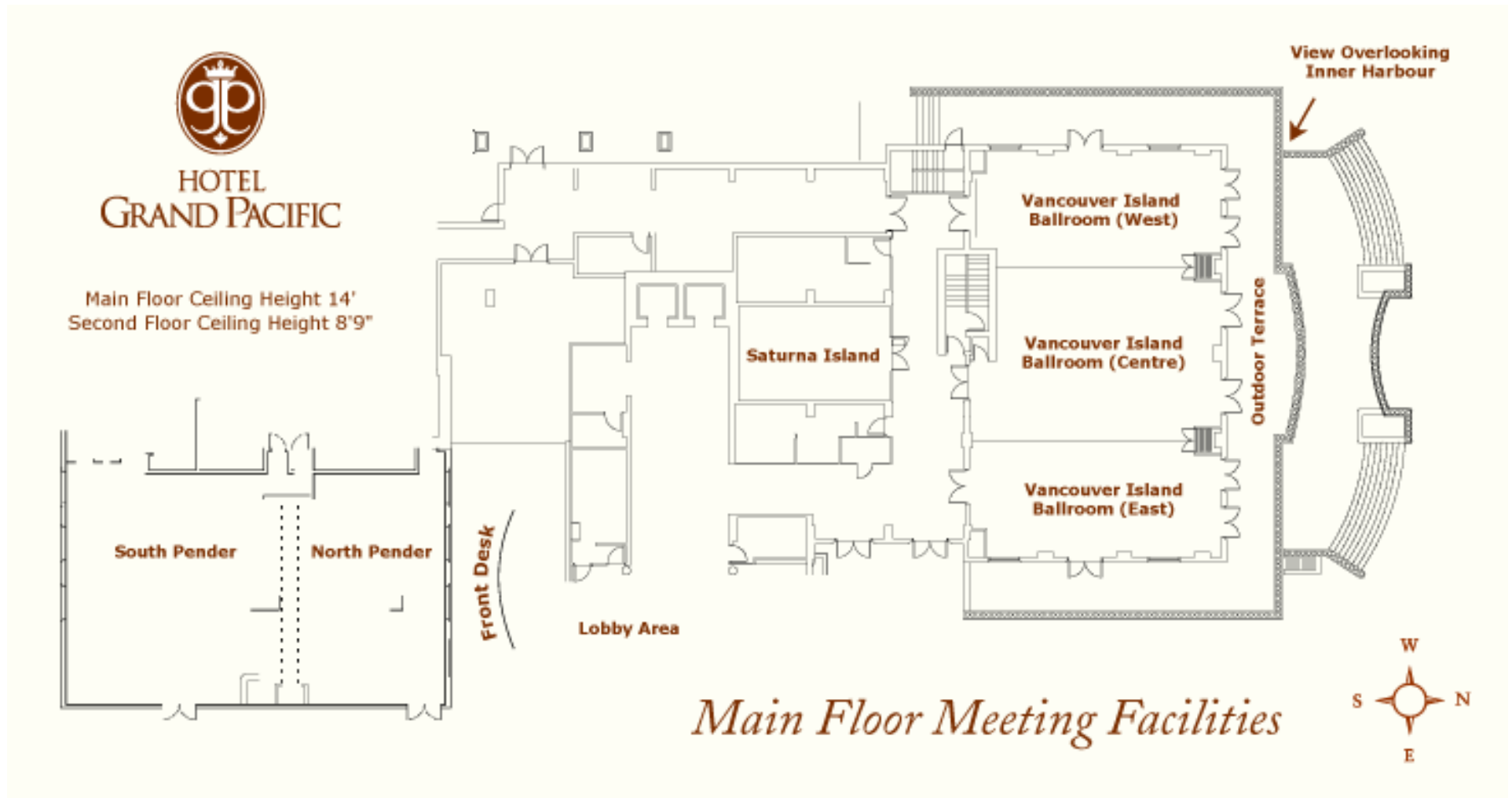
Meeting Rooms	Dimensions	Sq Ft	Classroom*	Theatre	Round Tables	U-shape	Hollow-square *	Boardroom	Reception
Vancouver Island Ballroom	70' x 43' x 11'	3010	170	260	23 / 20	78	98	n/a	300
East	20' x 43'	860	50 / 40	60	5 / 4	27	30	27	60
Centre	30' x 38' / 30'x43'	1290	70 / 60	110	8 / 7	32	40	32	120
West	20' x 40'	800	50 / 40	60	5 / 4	27	30	27	60
Centre/East		2150	130 / 100	160	13 / 11	56	70	56	200
Centre/West		2090	130 / 100	160	13 / 11	54	70	54	200
Saturna	16' x 27' x 8'	432	30 / 20	35 / 30	2 / 2	20	22	20 / 14	30
Pender Island Ballroom	38' x 62' x 11'	2437	100 / 90	180	13 / 10	n/a	n/a	n/a	200
South	38' x 37'	1425	60	100	7 / 6	34	40	34/30	120
North	38' x 25'	1012	35	60	5 / 4	24	26	26/24	60
Saltspring Room 231	28' x 15' / 28' x 23'	644	26	30	3 / 3	N/A	N/A	20 / 16	35
Galiano Room 233	29' x 16' / 29' x 23'	667	30	40	3 / 3	24	26	26 / 24	40
Gabriola Room 237	27' x 16' / 27' x 13'	600	24	35	2 / 2	20	22	18 / 16	35
Denman Room 241	27' x 13'	417	20	25	2 / 2	suggest brdrm	suggest brdrm	18 / 16	30
Hornby Room 245	22' x 17' / 27' x 17'	520	20	30	2 / 2	16	18	16 / 14	30
Cabinet Room 612	19' x 34'	640	n/a	n/a	na	21	n/a	n/a	n/a

Pacific Restaurant 70 Seats

Pacific Lounge 55 Seats

The Mark 28 Seats

HOTEL GRAND PACIFIC FUNCTION CAPACITIES

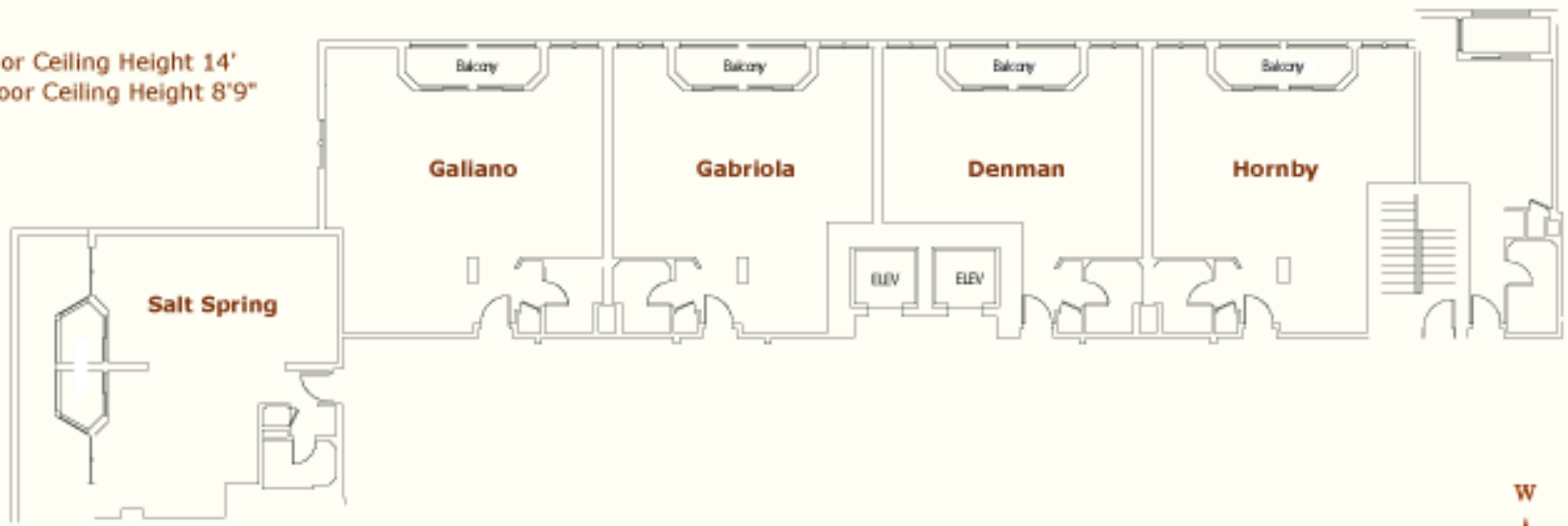


HOTEL GRAND PACIFIC FUNCTION CAPACITIES



HOTEL
GRAND PACIFIC

Main Floor Ceiling Height 14'
Second Floor Ceiling Height 8'9"



Second Floor Meeting Facilities

